

AFH-DD Floor Plan

Please draw a floor plan of your home, on a separate sheet of paper, using the following symbols, where appropriate. An example of a floor plan using these symbols has been provided on the back of this page. The floor plan of the home must include:

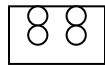
1. the location of resident bedrooms (including location of resident bed), and other occupants of the home;
2. the location and dimensions of all windows;
3. the dimensions of the window openings for all bedroom windows;
4. the dimensions of all bedrooms;
5. exit routes;
6. smoke detectors;
7. carbon monoxide detectors;
8. fire extinguisher; and
9. wheelchair ramps (if applicable).
10. A diagram of the house and property showing safety devices for fireplaces, woodstoves, water features (fountains, ponds, pools, hot tubs) and outside structures and fencing.

Please attach this sheet to the back of your floor plan.

Window



Stove



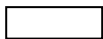
Fire Extinguisher



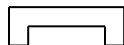
Stairways



Bed



Fireplace



Smoke Detector



Wood Stove



Ramp



Furnace



Fire Exits



**Carbon Monoxide
Sensor**



Please identify Resident bedrooms using a 'R'. If two residents share a room identify as "2 Res".

Provider(s) _____ Date _____

Address _____

City _____ Zip Code _____



Floor Plan Example

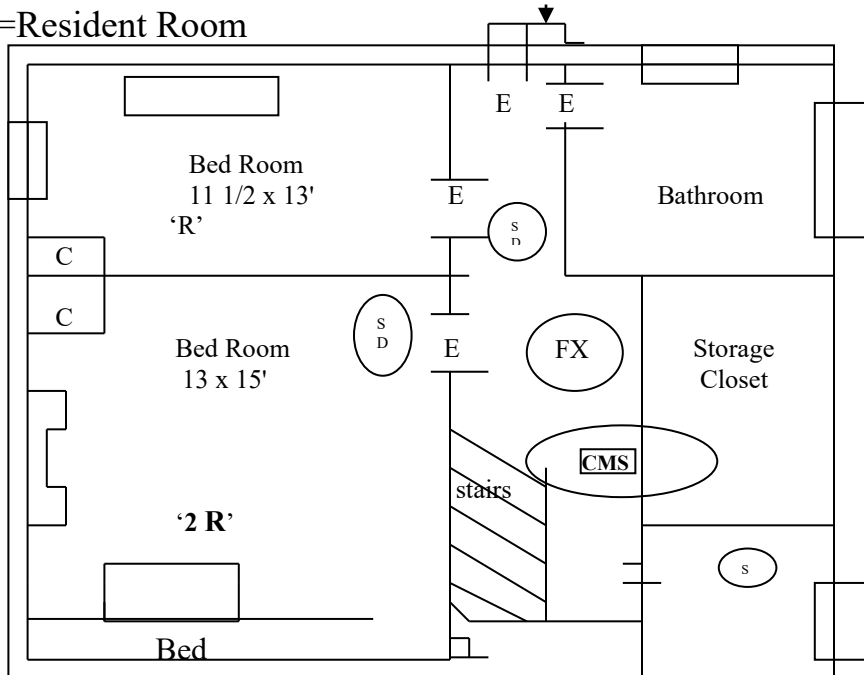
Include window dimensions and Bedroom window openings!

Second Floor

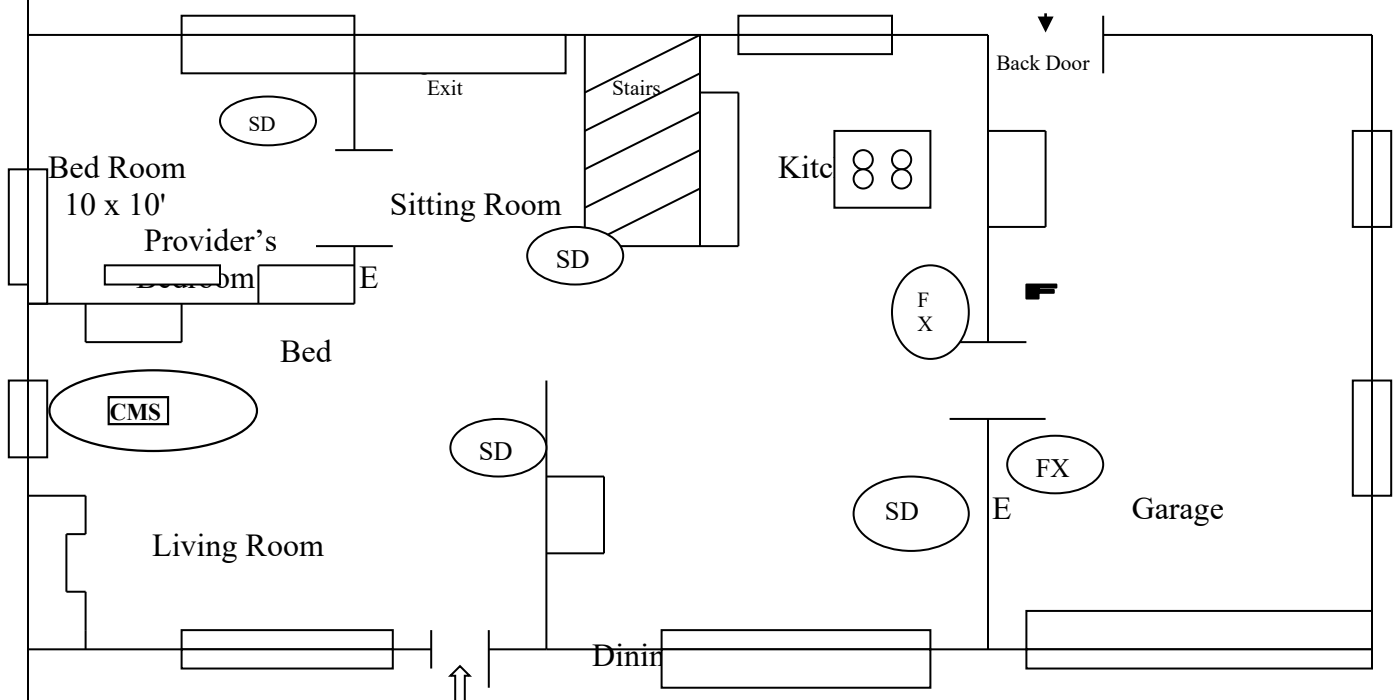
R=Resident Room

Out Side Stairs

E= Exits, SD=Smoke Detec. FX=Fire Ext.



First Floor Include window dimensions and Bedroom window openings!



Measuring Bedroom Window Openings:

Window openings must be at least 821 sq inches.

The height can be no less than 22" and the width can be no less than 20 inches.

Total sq inches could be 821 sq in, but not meet the minimum height and width.

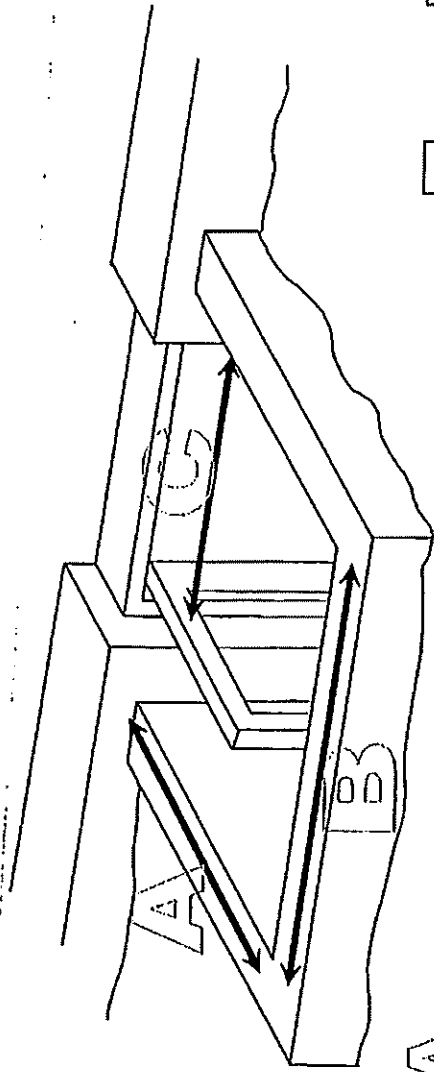
If a window opening has a width of 20 in, the height must be at least 42 in to = more than 821 sq in.

If the height is 22 in, the width must be at least 38 inch to = more than 821 sq in.

Inside window sill heights can be no more than 44 in. from the floor level or there must be approved steps or other aids to window egress that may be used by individuals. Windows with a clear opening of not less than 5.0 square feet or 720 square inches with sill heights of 48 inches may be accepted when approved by the State Fire Marshal or the designee of the State Fire Marshal.

Window Well Worksheet

1) Check Window Well Dimensions



Is the clear horizontal distance,

A at least 36 inches?

Yes ☐

☐

Is the clear horizontal distance,

B at least 36 inches?

Yes ☐

☐

Is the clear horizontal distance,

C with the window open at least 30 inches?

Yes ☐

☐

2) Check Window Well Opening Area (fill in the three blanks)

$$A \times C = \text{Area}$$

Horizontal distance (inches)

Horizontal distance (inches)

Net horizontal opening (square inches)

Is the clear openable area,

Area at least 1,080 square inches?

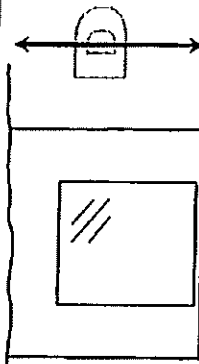
Yes ☐

☐

3) Check the vertical depth of the window well

If the distance, D from the bottom of the well to the top at grade is more than 44 inches, a ladder is required.

If a ladder is required, is one provided?



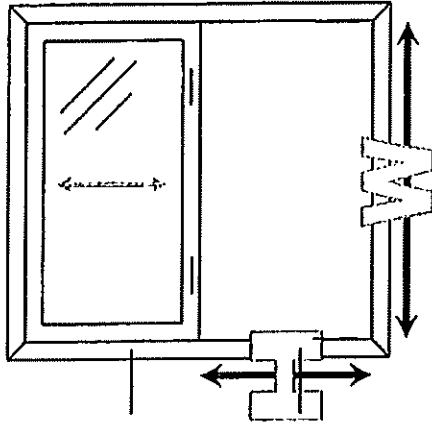
Yes ☐

☐

For Escape Windows

1) Check Window Height and Width

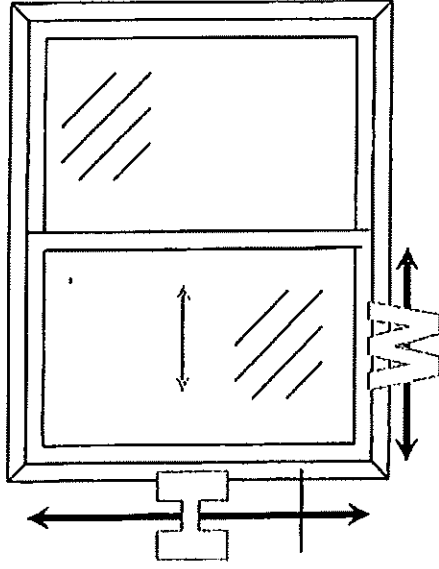
DOUBLE HUNG



Is the clear openable height,

Is the clear openable width,

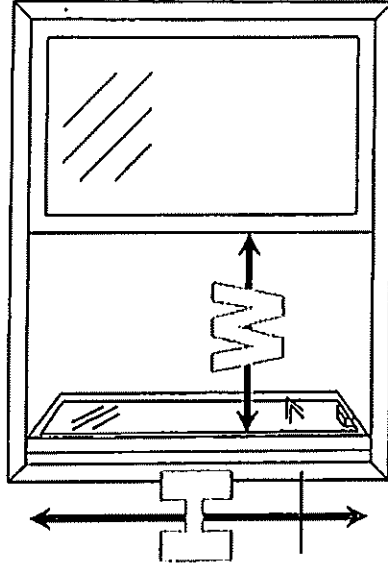
SLIDING



at least 24 inches?

at least 20 inches?

CASEMENT



Yes ☐ .. ☐

Yes ☐ .. ☐

2) Check Window Opening Area (fill in the three blanks)

$$H \times W = A$$

Openable height (inches) Openable width (inches) Openable area (square inches)

Is the clear openable area, A at least 5.7 square inches? Yes ☐ .. ☐

3) Check the distance from the floor to the bottom of opening

Is the distance, S from the floor to the finished sill (bottom of opening) 44 inches or less? Yes ☐ .. ☐



Opening Width = 28 inches

Overall Height = 42 inches

Opening Height = 21 inches